

Xerox® 700
Digital Color Press



Xerox 700 Digital Color Press
A Powerful Performer.
A Solid Value.



A solid investment in your digital printing business

No matter what kind of business you're in, you have to make sound decisions that will grow your business. So before you invest in any new technology, you want to be sure that you are going to get two things: value for your money in the short term, and return on your investment in the long term.

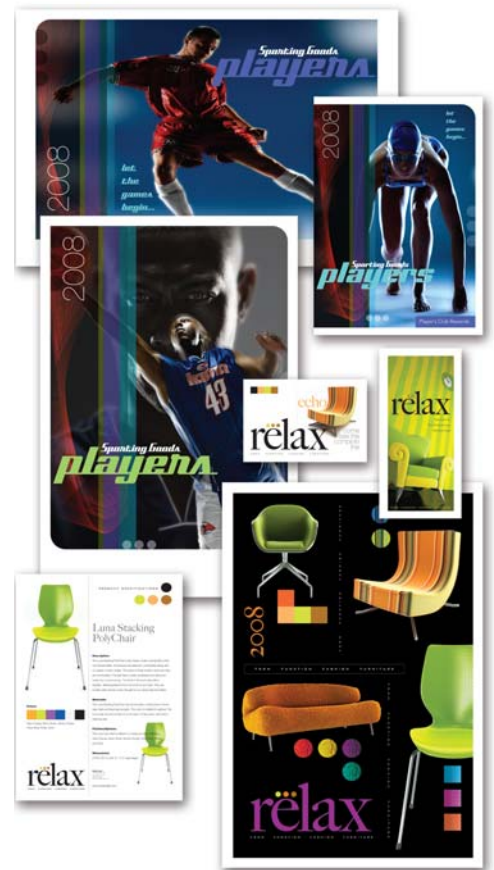
The Xerox 700 Digital Color Press delivers on both counts whether you're looking for new revenue opportunities or that ability to reduce costs. It's the first true production capable printer that makes it easy to get started in digital production printing. The Xerox 700 delivers everything you need to capture your share of the explosive growth in digital color printing – outstanding image quality, excellent

performance, complete versatility, effortless productivity, day-in, day-out reliability. It's a powerful performer designed to delight your customers and grow your business.

With its speed, paper handling and in-line finishing capabilities*, the Xerox 700 puts a wide range of high-value applications within your reach.

Create value-driven coated and uncoated applications like:

Saddle-stitched booklets, catalogs, manuals, tri-fold brochures and variable print postcards, direct mail, photo specialty products and more.



The Xerox 700 Digital Color Press reflects everything we have learned helping thousands of printers build successful digital printing businesses.

Image quality is key

It's the first thing your customers see. It's what you sell.

Your customers will love the smooth color sweeps, sharp, high-resolution photographs, crisp, clean text, outstanding gradients and fine detail. That's because you are printing in the highest resolution available – 2400 x 2400 dpi. The Xerox 700 uses a robust transfer system to transfer the image to the page for consistent results over short, medium, and long runs.

Two more points on output quality. First, you get a smooth, offset-like matte finish with outstanding shadow detail, and superior halftones thanks to our newest Emulsion Aggregation (EA) toner.

Second, you get tight front-to-back registration (to within +/- 1.0 mm), important for postcards, business cards, catalogs, and all two-sided work. A Contact Image Sensor detects the leading edge of the page and adjusts for registration (difficult jobs can have special operator adjustments done at the User Interface).



Security is part of the design blueprint

As a leader in the development of digital technology, we are committed to keeping your digital information safe and secure. We have included security features such as: Secure Pass-words, Data Encryption, IP Filtering, and Disk Overwrite Protection to secure company data in both our printer and print server options.



Easy fine tuning for great results

With the Xerox 700, you have easy-to-use operator controls for making adjustments for front to back registration, perpendicularity, skew, and magnification for difficult jobs. You can also create and store custom paper and alignment profiles for specific customer jobs and paper stocks.

Everything you need to do a quality job

A surprising host of options and unsurpassed versatility at an equally surprising price point.

Whether you're new to digital color or upgrading your current capabilities, the Xerox 700 Digital Color Press has features that enable you to say yes to more and more of your customers' most demanding jobs.

Take a closer look inside and out and you'll see how the Xerox 700 is built to give you reliable performance, exceptional media handling, and customer-pleasing quality start to finish.



1

3 Standard Paper Trays: Along with the bypass tray holds 1900 sheets of paper.

2

Oversized High-Capacity Feeder: For larger stocks, choose one or two robust production paper trays each holding 2000 sheets of coated or uncoated media.

Reliable paper movement prevents misfeeds. This production-class feeder has four blowers, an advanced roller system, and a center registration system (shown).

High-Capacity Feeder: Optional high-capacity feeder holds 2000 sheets of paper (not shown).

3

Image Quality: 2400 x 2400 dpi resolution. The self-cleaning Corotron assembly offers improved productivity and image quality.

4

Front to Back Registration: Contact Image Sensor provides adjustments to deliver +/- 1 mm registration.

5

Document Handler: Holds up to 11 x 17 in (A3) originals; Duplex Automatic Document Feeder (DADF), it reliably scans two-sided originals automatically.

6

User Interface: Easier to use, offering greater flexibility, while providing more operator information and control over critical issues such as alignment and registration. It lets you create and store custom paper profiles for repeated use.



7

Load-While-Run Toner: Provides longer print runs and enhanced productivity. Two black toner SMart Kit™ replaceable units keep replenishment intervention to a minimum and productivity to a maximum.

SMart Kit replaceable units for toner, drum rolls, fuser, and waste toner bottle raise uptime to all-time highs.

8

Paper Path: Straight simple paper path increases reliability.

9

Smart Decurler Module: You get outstanding productivity in your finishing equipment because this robust post-fuser decurler with two rollers and bars ensures that sheets are flat. This series of “Smart” decurlers take into consideration the side, the toner coverage and the humidity and applies the most appropriate pressure to ensure the flattest output.

10

Optional Finishers: Produce more revenue generating applications including coated paper in-line with a suite of optional finishers including: Offset Catch Tray, Advanced Finisher, Professional Finisher, a Light Production C Finisher with optional folder and booklet maker, and High-Capacity Stacker.

An adaptable solution

That means you choose the configuration that best suits your business model. Choose from five print servers and optional feeding and finishing modules and configure the Xerox 700 the way you want it today with the option to evolve it for tomorrow.

Versatility from start to finish

Professional feeding and finishing are the beginning and end of the perfect job. You have all the options you need to make anything from coated brochures, newsletters, presentations, direct mail, booklets and more... a great success.

High-Capacity Feeder. Holds 2000 sheets in a wide range of weights.

Oversized High-Capacity Feeder. Ideal for signature booklets and other high-end applications.

Offset Catch Tray. 500 sheet stacking.

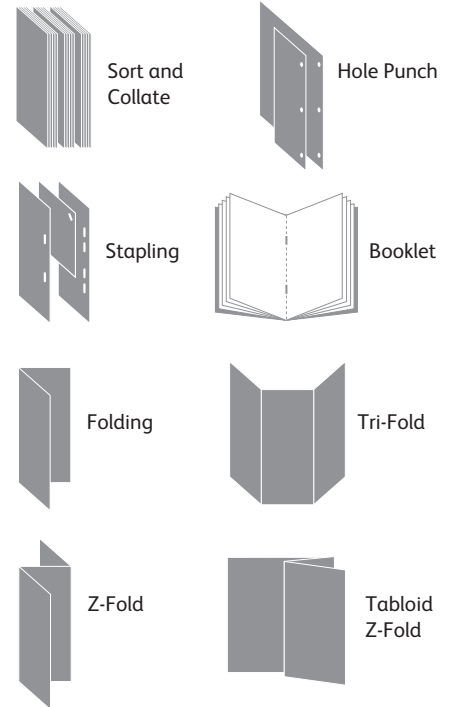
Advanced Finisher. Ideal for basic binders, manuals, reports, and presentations. This finishing option offers 50-sheet, multi-position stapling and hole punching – 2, 3, or 4 holes.

Professional Finisher. The choice for uncoated, high-page-count booklets, manuals, etc. In addition to the features of the Advanced

Finisher, this finisher includes saddle stitching with center fold for easy booklet making for up to a 60-page booklet and bi-fold brochure assembly.

Light-Production C Finisher.* This finishing option enables coated booklets, brochures, and bifold mailers as well as stacking, stapling and hole punching. It also includes an interposer input tray. Even more versatility can be obtained with the addition of the optional tri-fold, z-fold, and tabloid z-fold module for this finisher.

High Capacity Stacker.* 5000 sheet stacking for long production runs.



* Interface module required

Choose the perfect print server to meet the demands of your business

You get more choices, more capabilities. These powerful servers put a variety of color tools, workflow capabilities, processing speed and sophisticated color management controls at your fingertips.

Xerox FreeFlow® Print Server

Xerox CX Print Server,
Powered by Creo™

Xerox EX Print Server,
Powered by Fiery®

Xerox Integrated Fiery®
Color Server

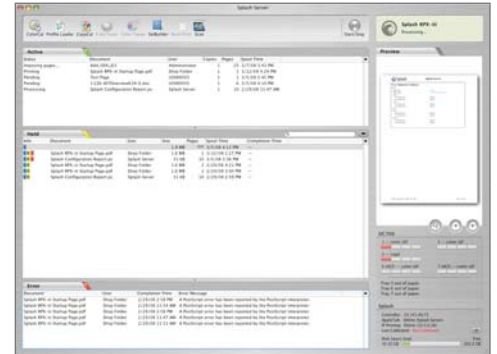
EFI Splash RPX-iii™
Color Workflow Software

Each server is designed to meet a specific set of workflow and application requirements.

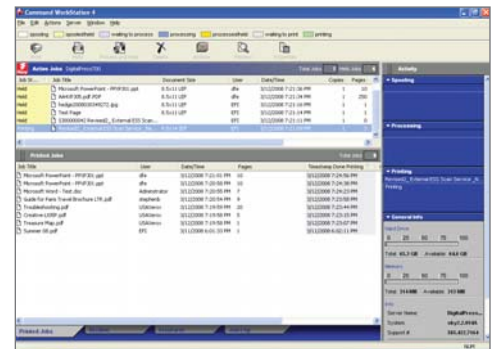
Your Xerox representative will help you choose the one that best suits your needs.

Production Printing at an Affordable Price. A winning business proposition

Now you can have it all – image quality, ease of use, productivity, media latitude, feeding and finishing options, and world-class workflow solutions – at a truly affordable price. Want to capture your share of the growth in digital color printing? Want to reduce your costs while expanding your digital color printing capabilities? Then the Xerox 700 is the answer you've been looking for.



Splash RPX-iii



Integrated Fiery Color Server



FreeFlow® Print Server



CX Print Server



EX Print Server

Xerox® 700 Digital Color Press Specifications

Resolution

- Print/Copy: 2400 x 2400 dpi
- Scan: 200 x 200, 300 x 300, 400 x 400, 600 x 600

Technology

- Load-while-run capability
- Advanced Registration Technology for tighter control
- Custom paper set-up
- Xerox EA low melt toner
- SMart Kit™ replaceable units for toners, drums, fuser, charge corotron, waste bottle, staples
- Active decurling for heavy-weight media

Integrated Scanner

- 250 sheet capacity
- 50 ppm color/80 ppm b/w
- Originals up to 11 x 17 (A3) in weights from 38 gsm (16 lb bond) to 200 gsm (53 lb bond)
- Duplex Automatic Document Feeder (DADF)

Productivity/Print Speeds

- A4 / 8.5 x 11
 - 70 ppm (64-176 gsm uncoated)
 - 51 ppm (177-256 gsm uncoated) (106-176 gsm coated)
 - 35 ppm (257-300 gsm uncoated) (177-300 gsm coated)
- A3 / 11 x 17
 - 35 ppm (64-176 gsm uncoated)
 - 25 ppm (177-256 gsm uncoated) (106-176 gsm coated)
 - 17 ppm (257-300 gsm uncoated) (177-300 gsm coated)
- SRA3 / 12 x 18
 - 31 ppm (64-176 gsm uncoated)
 - 22 ppm (177-256 gsm uncoated) (106-176 gsm coated)
 - 15 ppm (257-300 gsm uncoated) (177-300 gsm coated)

Paper Format/Sizes

- Maximum sheet size all trays: 13 x 19.2 in/ SRA3/330 x 488 mm
- Maximum print image area: 12.72 x 18.9 in/ 323 x 480 mm
- Maximum copy image area: 11.6 x 16.8 in/ 297 x 432 mm
- Minimum paper size trays 1-3: 5.5 x 7.2 in/ 140 x 182 mm
- Minimum paper size Bypass: 4 x 5.6 in/100 x 148 mm
- Minimum paper size OHCF: 7.2 x 10 in/B5/ 176 x 250 mm

Paper Flexibility/Weights

- Internal Trays 1-3: 550 sheet each, 18 lb bond to 80 lb cover (64-220 gsm) uncoated; 28 lb bond to 80 lb cover (106 gsm - 220 gsm) coated
- By Pass Tray: 250 sheets, 18 lb bond-110 lb cover (64-300 gsm) uncoated; 28 lb bond-110 lb cover (106 gsm - 300 gsm) coated
- Coated, heavyweight, transparencies, DocuMagnet®, labels, tabs. All Trays run coated stock

Paper Capacity and Handling

- 1900 sheets up to 13 x 19.2 in/SRA3 standard via three internal trays and bypass tray
- Maximum paper capacity: 5900 sheets 13 x 19.2 in/ SRA3 via standard trays and two Oversized High Capacity Feeders (optional)
- Two-sided printing: Automatic up to 80 lb Cover/ 220 gsm coated and uncoated from all trays. Manual up to 110 lb cover/300 gsm

Options

- High-Capacity Feeder:
 - 8.5 x 11 in/A4
 - 2000 sheets up to 80 lb cover/220 gsm
- Oversized High-Capacity Feeder:
 - 18 lb bond - 110 lb cover (64 - 300 gsm) uncoated
 - 28 lb bond - 110 lb cover (106 - 300 gsm) coated
 - 7.2 x 10 in/182 x 250 mm/ B5 to 13 x 19.2 in/SRA3/330 x 488 mm
 - Auto duplex up to 220 gsm/80 lb cover coated and uncoated
 - Manual duplex up to 300 gsm/110 lb cover
 - One or two Tray Module: 2000 sheets or 4000 sheets
- Offset Catch Tray
 - 500 sheet stacking

- Advanced Finisher:
 - 500 sheet top tray
 - 3,000 sheet stacker tray
 - Multi-position stapling
 - Hole punching
- Professional Finisher
 - 500 sheet top tray
 - 1,500 sheet stacker tray
 - Stapling up to 50 sheets
 - Hole punching
 - Bi-fold, saddle stitch booklet maker up to 20 uncoated sheets
- Light Production C Finisher:
 - 500 sheet top tray
 - 3000 sheet stacker tray
 - Multi-position hole punching and stapling
 - Stapling up to 100 sheets
 - 200 sheet interposer
 - Optional booklet maker for coated bi-fold or saddle-stitch coated booklet
 - Optional Folding Module for tri-fold and Z-fold (A4/letter and A3/tabloid)
- High Capacity Stacker:
 - 500 sheet top tray
 - 4 x 5.6 in/102 x 142 mm to 13 x 19.2 in/SRA3
 - 5000 sheet main tray
 - 7.2 x 10.5 in/182 x 257 mm to 13 x 19.2 in/SRA3
- Convenience Stapler
 - Staple up to 50 sheets of 90 gsm/24 lb media
- Foreign Interface Kit
 - The Foreign Interface Kit enables the connection of external devices such as audiotrons or coin-op devices. This will perform in copy and print modes

Choice of Print Servers

- FreeFlow® Print Server
- CX Print Server
- EX Print Server
- Integrated Fiery® Color Server
- EFI™ Splash Software

Electrical

- Printer 200-240 VAC/50/60 Hz
- Options: 100-240 VAC 50/60 Hz

Dimensions

- Height 54 in/1372 mm
- Width 68 in/1714 mm
- Depth 31 in/777 mm

Contact your Xerox representative for details to find out more about adding a bit of color to your business.

